

Prof. Chih-Wen Weng / Department of Applied Mathematics

Distance-Regular Graphs, Group Testings, Presentation and Representation Theory, Combinatorial Matrix Theory, Graph Theory

- ✦ Yu-pei Huang, Yeh-jong Pan and Chih-wen Weng, Nonexistence of a Class of Distance-Regular Graphs, the electronic journal of combinatorics, Volume 22, Issue 2 (2015), #P2.37

(Show the nonexistence of a class of DRG)

- ✦ Jun Guo, Kaishun Wang, Chih-wen Weng, Pooling semilattices and non-adaptive pooling designs, Discrete Mathematics 320(2014), 64-72

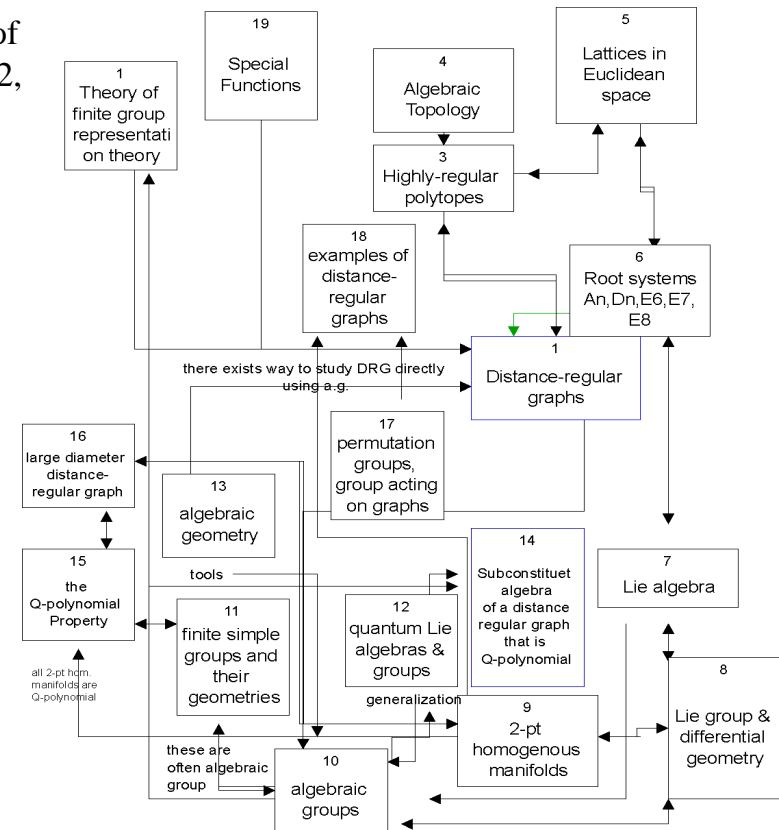
(Construct pooling designs from semilattices)

- ✦ Chia-an Liu, Chih-wen Weng, Spectral radius of bipartite graphs, Linear Algebra and its Applications, 474(2015), 30-43

(Provide a sharp upper bound of bipartite graphs)

- ✦ Yen-Jen Cheng, Feng-lei Fan, Chih-wen Weng, An extending result on spectral radius of bipartite graphs, arXiv:1509.07586

(Provide a spectral characterization of twin primes)



Drew by Paul Terwilliger

<http://jupiter.math.nctu.edu.tw/~weng/weng.htm>